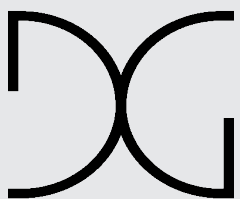




SKU: FGPHWSSU,
FGPHWSDB

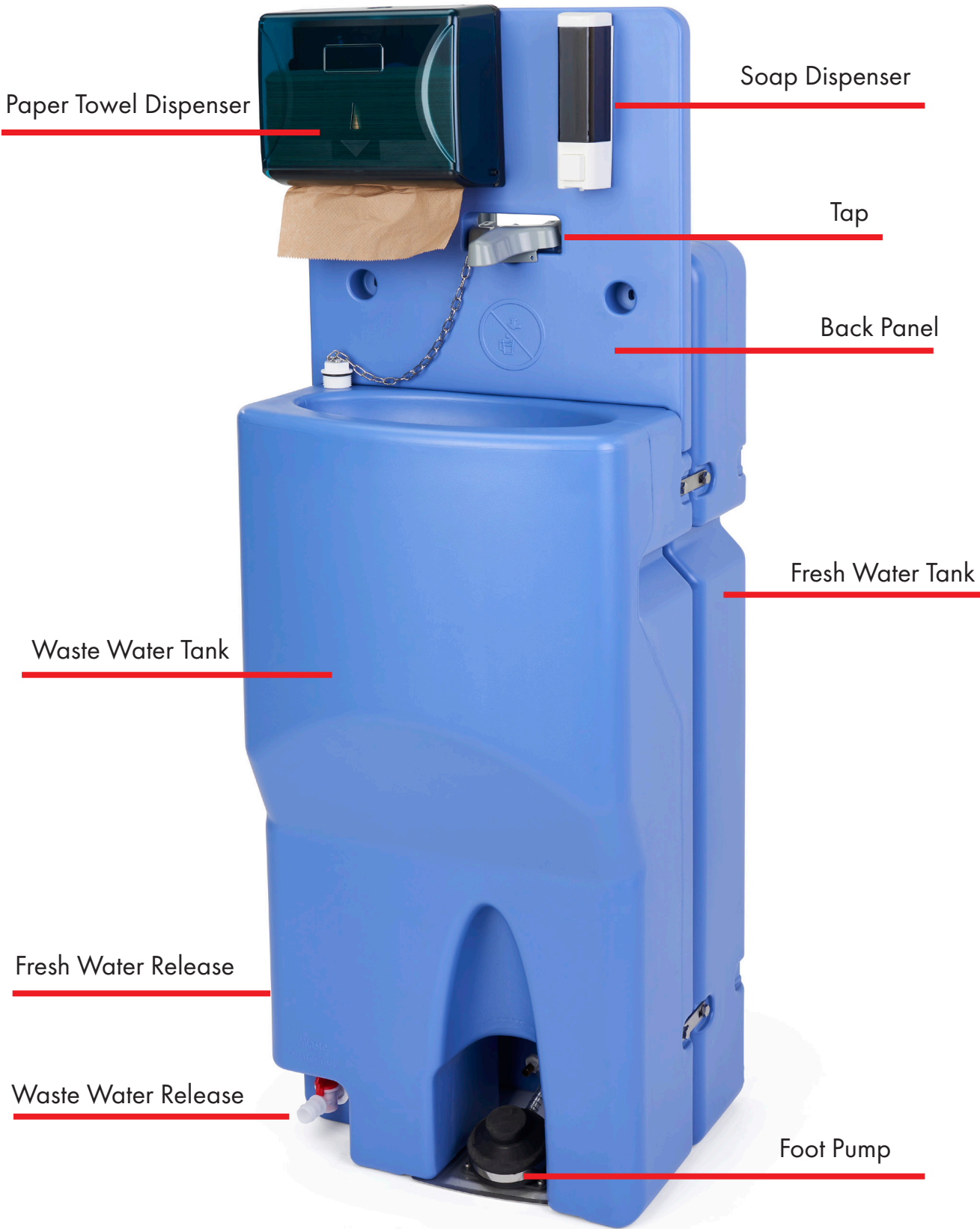
PORTABLE HAND- WASHING STATION

User Manual



DISPLAYS2GO

CONNECTING PEOPLE & BRANDS WITH THE WORLD



Paper Towel Dispenser

Soap Dispenser

Tap

Back Panel

Fresh Water Tank

Waste Water Tank

Fresh Water Release

Waste Water Release

Foot Pump

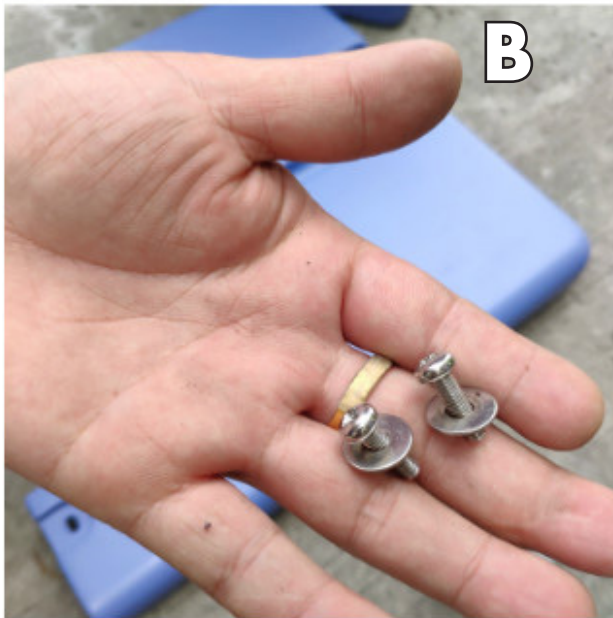
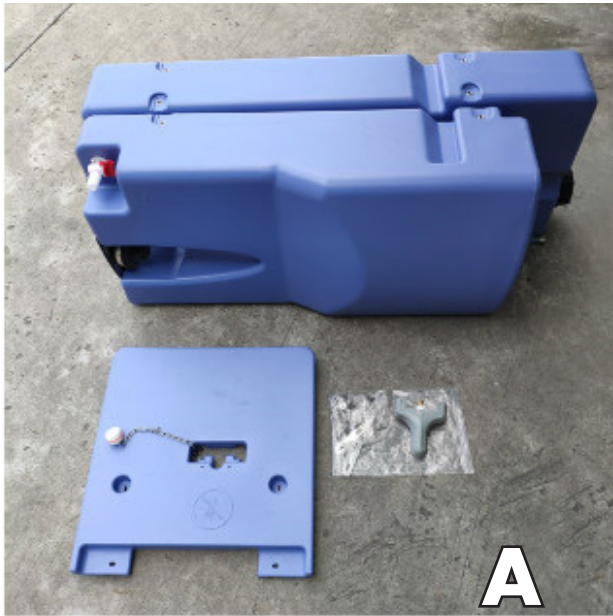
PARTS LIST

PART	QUANTITY
A: Back Panel	1
B: Waste Tank.....	1
C: Fresh Water Tank.....	1
D: Tap.....	1
E: Screws, Washers for Tap	4
F: Adjustable Clamp	2
G: Clamp Screw	2
H: Brackets	4
I: Bracket Screws.....	8
J: Soap Dispenser	1
K: Paper Towel Dispenser.....	1
L: Soap Dispenser Hardware (Bagged)	1
M: Paper Towel Dispenser Hardware (Bagged).....	1

TOOLS REQUIRED:
Phillips Head Screwdriver
Drill

NOTE: Parts list quantities are based on the single-sink model. Part quantities may vary, depending on model purchased.

NOTE: Back of manual will include maintenance instructions, as well as important safety information. Please see PAGE 11.



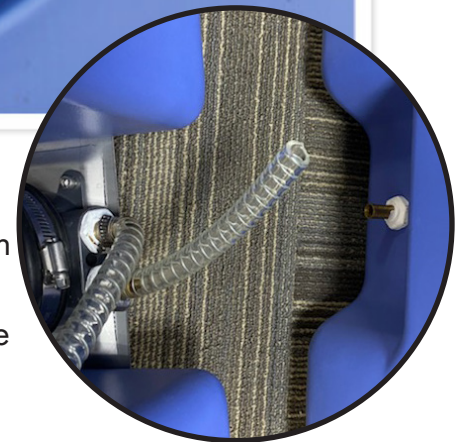
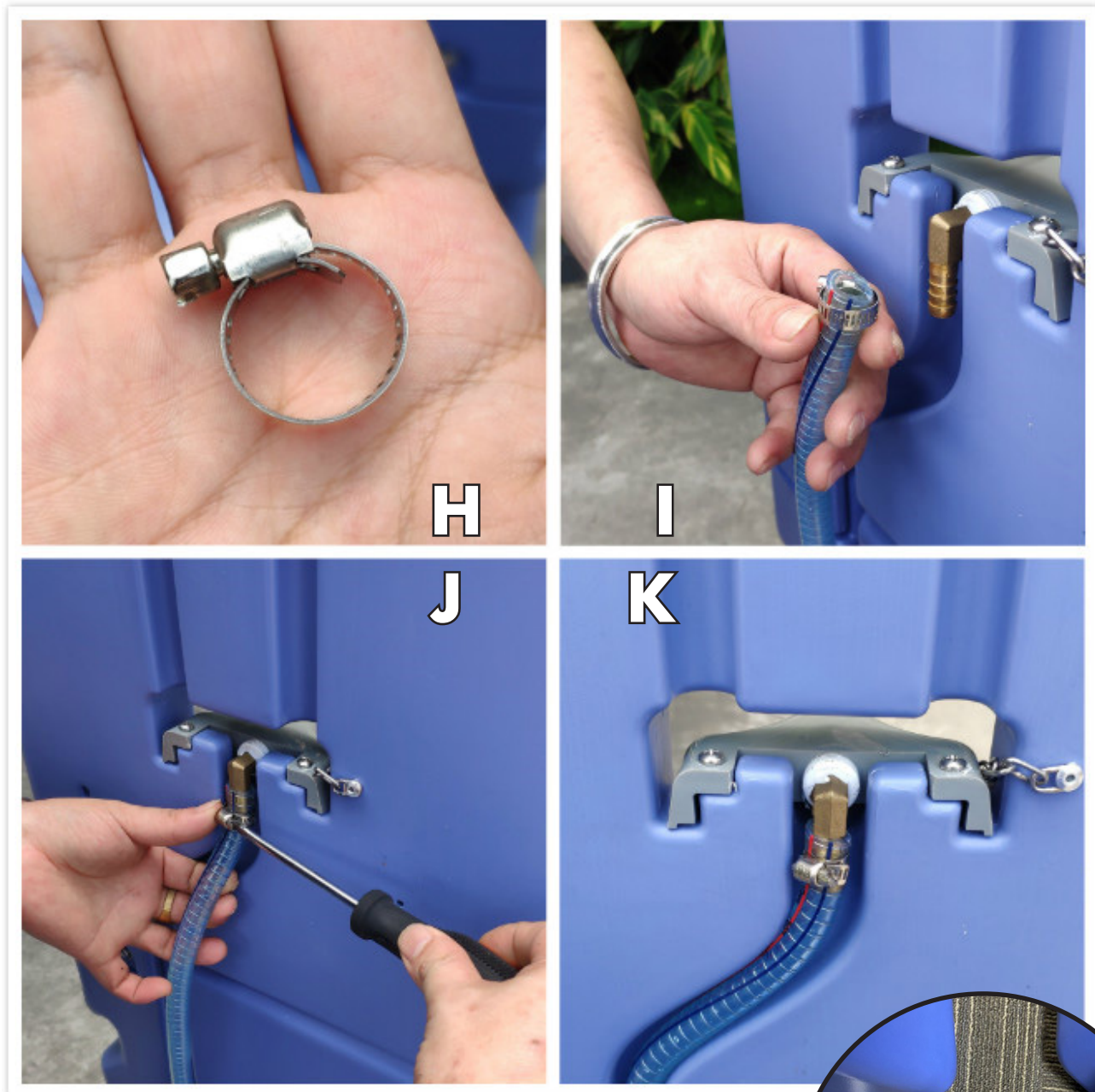
1. Attach back panel to the waste tank. This will require two screws. Be sure to insert the back panel with the screw holes facing the back of the unit, as shown.

FOR DOUBLE UNIT: Repeat step 1 for second waste tank and back panel.



2. Using a drill, affix the tap on the back panel. This will require four screws. (Figs. G and H demonstrate the front and back of the tap.)

FOR DOUBLE UNIT: Repeat step 2 to attach second tap to second back panel.

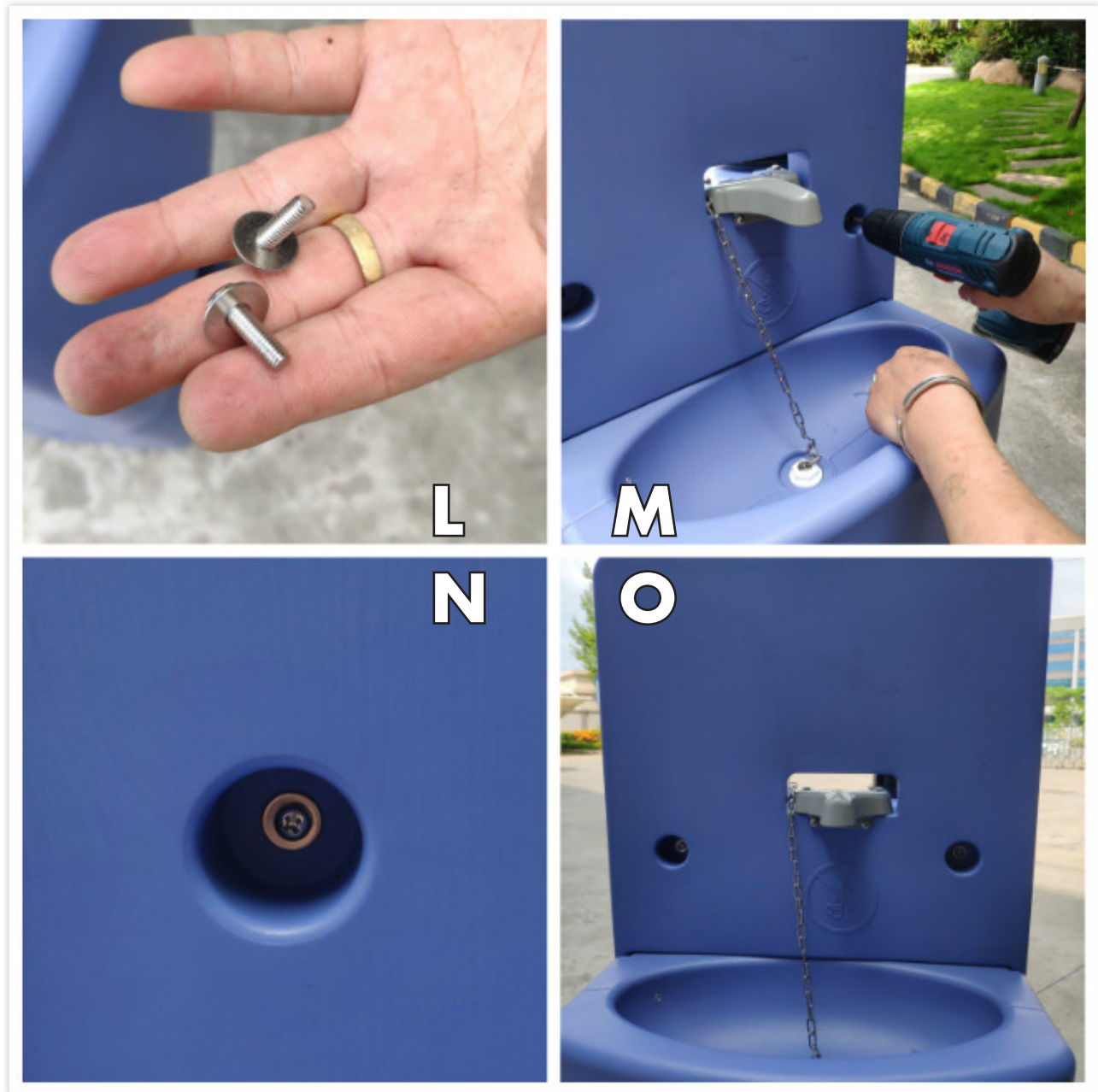


3. Connect inlet water pipe to water tap on back of the unit. To do this, slide adjustable clamp over the top of the pipe, then align mouth to the tap. Then, tighten clamp to secure the connection. Inlet water pipe is located at the bottom of the waste water tank, attached to the foot pump.

4. Attach second, shorter water pipe to the small mouthpiece on the fresh water tank, using the second adjustable clamp.

NOTE: Use a screwdriver to tighten adjustable clamp.

FOR DOUBLE UNIT: Repeat steps 3 and 4 with second waste water tank. Note that double units share one fresh water tank.



5. Attach back panel to fresh water tank, using two screws, as shown.

FOR DOUBLE UNIT: Repeat on second waste water tank of the unit.



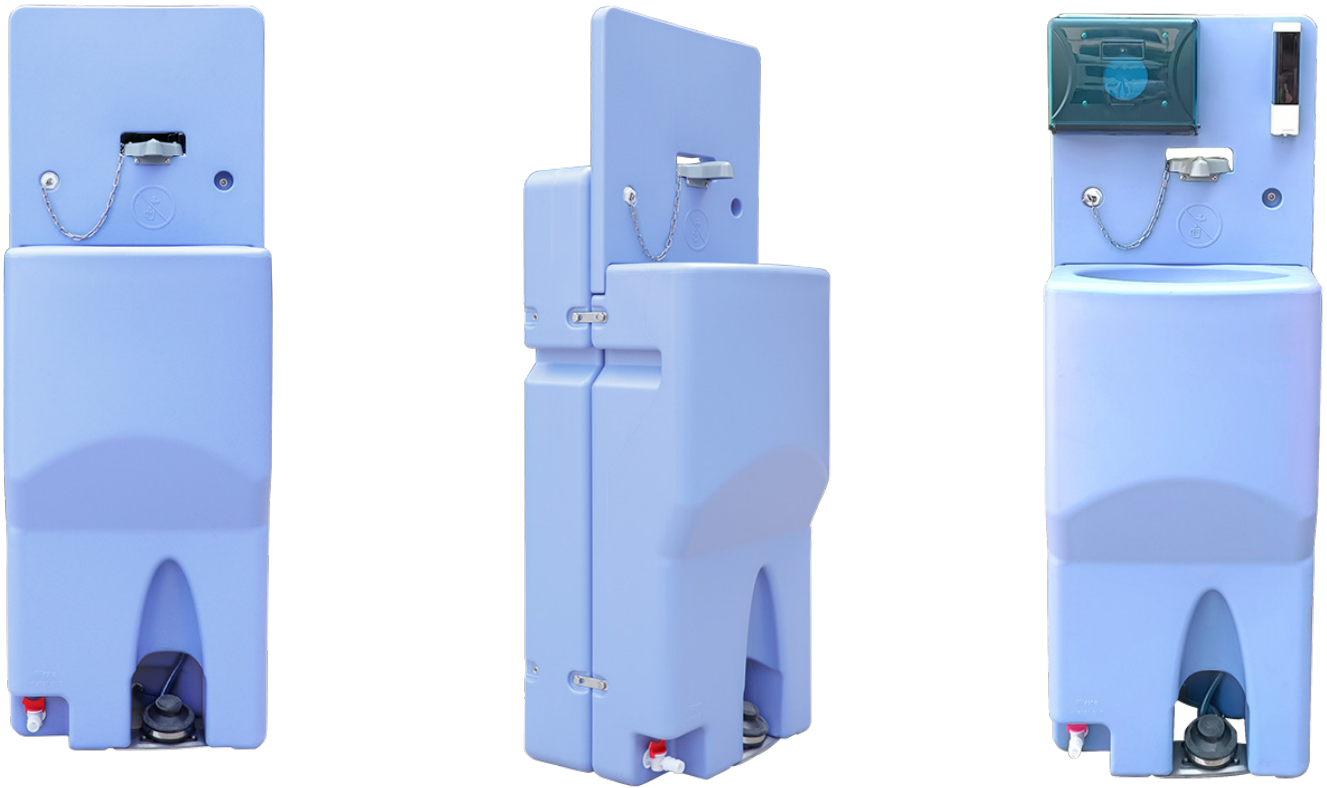
6. Using four screws, attach fresh water tank to the waste tank. To do this, line up bracket slots, then insert screws into pre-drilled holes. Using a drill, tighten to secure.

NOTE: There will be brackets on both sides of the unit.



7. Attach soap dispenser and paper towel holder to the back panel. Soap dispenser and towel dispenser will each slot onto their holders by sliding each down on its bracket.

NOTE: Hardware for both the soap and paper towel dispensers is bagged separately. These bags will be located inside the appropriate dispenser.



Enjoy your new portable hand-washing station!



Scan QR code to visit product page

If you have any questions regarding our products, please visit us at www.displays2go.com or contact D2G customer service at 844-221-3388.

USE & MAINTENANCE

- LOCATION & MOBILITY

Prior to filling, move to desired location, as the unit will be extremely difficult to move once filled with water. Always use two people to move the unit. Whenever possible, drain unit before moving. Use the unit's handles to transport.

- FILLING WITH FRESH WATER

Unscrew fill cap, located on the top of the unit's wash basin, then fill with fresh water from a hose or other type of funnel system. Continue to fill until desired water capacity is reached. Replace and tighten cap to close.

RECOMMENDED: Fill with a few gallons at first assembly, to ensure system is working properly. Test by pumping several times, priming the system. After priming, depressing foot pump will release fresh water from tap.

- EMPTYING FRESH WATER

Drain the fresh water tank by unscrewing the white cap at the bottom of the fresh water tank. Once water has been fully drained, replace the plug.

- EMPTYING GRAY WATER

Move unit to a proper location to drain. The release valve is located at the bottom of the waste water tank and is white with a red handle. Turn the red handle away from the unit; this will open the valve and release the gray water. To close, turn handle back in.

- CLEANING

Mild soap can be used on this unit to clean surfaces and component parts. Mild abrasive cleaner can be used to address minor scratches and abrasions.

- REFILLS

Paper Towel Dispenser: 9.25x9" Multi-fold 1-Ply Towels. To refill, use button on the top of the dispenser to open.

Soap Dispenser: Holds 200 mL of liquid soap. To refill, turn key in top of unit to open.

SAFETY INFORMATION

Unit comes with safety stickers which are **required** to be applied to the unit.

Please see image of the sticker:

